

# SUPPLEMENTAL TECHNICAL MEMO

---

<b>To</b> Vira Pikhteryeva, ASCT District of Saanich	<b>From</b> Jason Rosevear, PEng
<b>Re</b> Conceptual Design Memorandum – West Saanich/Prospect Lake/Sparton Road	<b>Date</b> February 7, 2020

---

This memorandum is supplemental to the technical memorandum “Conceptual Design Memorandum – West Saanich/Prospect Lake/Sparton Road” prepared by McElhanney Ltd. and dated November 7, 2019.

The November 7 memo discussed the conceptual design of intersection improvements to the West Saanich Road/Prospect Lake Road/Sparton Road intersection and pedestrian path from Whitehead Park to the Prospect Lake Community Hall and was made public by the District of Saanich in advance of a public open house for the project.

This memo provides a summary of the public open house, feedback received from the public, and proposed revisions to the design concept in response to such feedback.

## 1. Public Open House

### 1.1. BACKGROUND

McElhanney prepared two conceptual designs for the proposed pedestrian path and intersection, which were presented to the public at an open house held on November 13, 2019 at the Prospect Lake Community Hall from 4:00 to 8:00 PM. Prior to the open house the conceptual design drawings and technical memo were posted on the District of Saanich’s web site. Representatives from McElhanney and District of Saanich Engineering were present at the open house to speak with attendees and answer questions.

The open house was well-attended, with 254 members of the public passing through. Attendees were encouraged to fill out a questionnaire provided by Saanich to assure their views were recorded. A copy of the questionnaire is included in [Appendix A](#).

## 1.2. FEEDBACK FROM OPEN HOUSE

Saanich received a total of 231 completed questionnaires. The responses were tabulated by Saanich and provided to McElhanney.

### 1.2.1. Makeup of Respondents

Table 1 below summarizes the responses to Question 2 – “How Do You Currently Use the West Saanich/Prospect Lake/Sparton Corridor?” Most of the respondents (84%) identified themselves as residents of the area. More than half (60%) indicated they walked along the corridor and approximately a third indicated they cycled.

*Table 1 – Responses to Question 2*

Question 2 - How Do You Currently Use the West Saanich/Prospect Lake/Sparton Corridor?		
User Group	Number of Respondents	% of Total Respondents
Total Respondents	231	100
Residents	195	84
Walking	139	60
Cycle	79	34
Transit	8	3.5
Motorist	192	83
Equestrian	15	6.5

Table 2 below summarizes the response to Question 3 – “How Often Do You Use the Corridor?”. Most respondents indicated they use the corridor daily.

*Table 2 – Responses to Question 3*

Question 3 – How Often Do You Use the Corridor?		
User Group	Number of Respondents	% of Total Respondents
Total Respondents	231	100
Use Daily	192	83
Use Weekly	26	11
Use Occasionally	14	6

### 1.2.2. Responses to Intersection Concepts

Questions 4 to 8 asked people’s opinions on the two proposed intersection concepts (signalized intersection and roundabout options) and the reasoning behind their choices. Generally, more respondents favoured a signalized intersection over a roundabout. Of the reasons for preferring a signalized intersection to a roundabout, some of the most common were:

- clear understanding of how the intersection works and who has right-of-way



- clear indication of when a pedestrian/cyclist/equestrian can cross the intersection (children crossing the road was a common concern).
- ability to customize traffic signal's timing to give priority to West Saanich traffic and discourage commuters from using Prospect Lake and Sparton as a cut-through roads.
- ability to provide safer cycle routing through the intersection
- smaller footprint and less impact on local businesses

The roundabout design received more criticism, perhaps due to lack of familiarity with this option (respondents who were opposed to the roundabout often mentioned confusion or no clear right of way as reasons for opposition). Supporters of the roundabout option most often mentioned freely flowing traffic and fewer idling vehicles as reasons for supporting the roundabout, though many also noted possible difficulties for pedestrians/cyclists/equestrians to cross during peak hours. Many also suggested some sort of pedestrian crossing light (perhaps a pushbutton-activated flashing beacon).

### 1.2.3. Responses to Sidewalk Concept

Question 9 asked respondents whether they were for or against the proposed path and the reasoning behind their choices. Of these who answered this question, most respondents (80%) were supportive of the proposed sidewalk. Where people spoke against the path, they seemed to think that it was unnecessary or wouldn't be used as intended.

Of those in support of sidewalk, common comments/criticisms included:

- path should be lit
- path could be wider/allow for multi-use
- path should be extended to the top of the Sparton Road hill (east of PLCH)

### 1.2.4. Other Comments

Much discussion at the public open house revolved around the issue of parking. Of note, residents felt very strongly about providing additional parking at Prospect Lake Elementary School and to maintain some parking at the Mosi Café. This was echoed in comments in the questionnaires.

Other common comments (both at the open house and on questionnaires) included:

- Desire for some form of traffic calming on Prospect Lake and Sparton Roads (though feedback on the proposed narrowed one-way section of Sparton Road was roughly split between those in favour and those against)
- Desire for accesses to businesses (e.g. gas bar) to be maintained
- Desire to discourage commuters/passthrough traffic



## 2. Revised Concept

With the valuable input gained from the open house, Saanich prepared a revised concept (preliminary drawings included in [Appendix B](#)). A summary of the key revisions follows:

- **Wider Path** – Revised path is a 2.15 m wide (in most areas) to address a common concern of respondents. The path is also proposed to be constructed in concrete with concrete curb and gutter (to discourage motorists parking on it).
- **Additional Parking** – Revised concept provides 13 angled parking spots on Sparton Road near West Saanich Road. Four parallel parking laybys are also provided in front of Prospect Lake Park.
- **Accesses to Gas Bar** – Revised concept maintains the two driveway accesses to the gas bar from West Saanich Road and the access from Sparton Road.
- **Improved Cycling Facility** – The proposed asphalt multi-use path from Prospect Lake Elementary to West Saanich Road has been extended to the east (Sparton Road) side of the intersection, with a letdown to allow cyclists to merge onto Sparton Road.
- **Improved Crosswalks** – The design vehicle for turning movements has been revised from a WB-20 (truck and trailer) to an MSU (fixed-axle) truck. This has allowed the footprint of the intersection to be reduced and the crossing lengths of the crosswalks to be reduced. Further, a preliminary signal timing design has been developed which will provide fully protected pedestrian movements.

The revised concept retains all traffic calming measures from previous design (including the proposed one-way road section at Sparton Road and Wray Road). Saanich is in discussions with School District 63 regarding the possibility of a new parking lot on Prospect Lake Elementary property – a decision regarding the school parking lot is expected in mid-March 2020.

## 3. Next Steps

We understand Saanich is currently reviewing the revised concept with various stakeholders. Once this stakeholder review is complete, Saanich's intention is to hire a consultant to complete detailed design of the revised concept with the aim of beginning construction in Fall 2020.



## 4. Closure

We trust the foregoing provides a summary of the public consultation process for the West Saanich Lake/Prospect Lake/Sparton Road conceptual design and serves to bring this phase of work to a conclusion.

Yours truly,  
McELHANNEY LTD.



Jason Rosevear, P.Eng., Project Engineer  
[jrosevear@mcelhanney.com](mailto:jrosevear@mcelhanney.com)  
778-747-3518



John Sturdy, P.Eng., Project Manager  
[jsturdy@mcelhanney.com](mailto:jsturdy@mcelhanney.com)  
778-746-7423



# APPENDIX A – OPEN HOUSE QUESTIONNAIRE





## West Saanich – Prospect Lake/ Sparton Road Upgrade

Conceptual Design Open House Comment Form – November 13<sup>th</sup>, 2019

**Q1. How did you hear about the project? (Check all that apply)**

- Community Association     Website     Street Signs     Mail Out     Social Media  
 Other: \_\_\_\_\_

**Q2. How do you currently use West Saanich / Prospect Lake / Sparton corridor? (Check all that apply)**

- Resident                       Commuter                       Business Owner  
 Walk                               Cycle                               Transit                               Drive                               Equestrian  
 Other: \_\_\_\_\_

**Q3. How often do you use this corridor and travel through the intersection?**

- Daily                               Weekly                               Occasionally

**Q4. What are your concerns about existing intersection?**

---

---

---

**Q5. What do you like about Roundabout concept for the intersection?**

---

---

---

**Q6. What would you change about Roundabout concept for the intersection?**

---

---

---

**Q7. What do you like about Traffic Signal concept for the intersection?**

---

---

---

**Q8. What would you change about Traffic Signal concept for the intersection?**

---

---

---

**Q9. What comments do you have for the sidewalk design?**

---

---

---

**Q10. What other things are important to you along this corridor?**

- |  |   |   |
|--|---|---|
| <input type="checkbox"/> Boulevards/Trees      | <input type="checkbox"/> Benches along the Sidewalk | <input type="checkbox"/> Gathering Places |
| <input type="checkbox"/> Bicycle Parking Racks | <input type="checkbox"/> Traffic Calming            | <input type="checkbox"/> Other:           |

---

---

---

---

---

**Please feel free to add any additional comments, concerns, or ideas related to this project.**

---

---

---

---

---

---

---

---

Thank you!

If you wish you can send us your comments or return this form by email at [Engineering@saanich.ca](mailto:Engineering@saanich.ca)

Please visit us on the web at <https://www.saanich.ca>



# APPENDIX B – REVISED CONCEPTUAL DRAWINGS

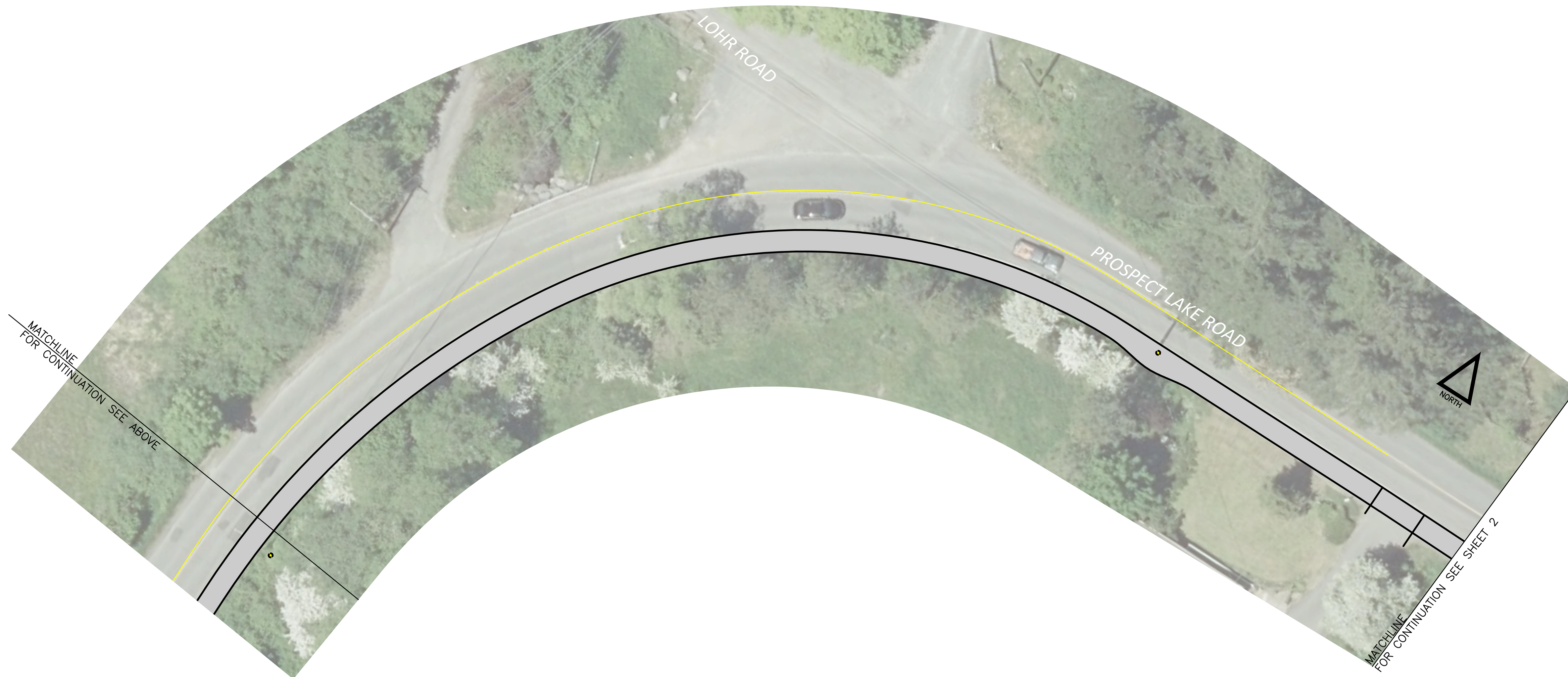


WEST SAANICH - PROSPECT LAKE / SPARTON PROJECT

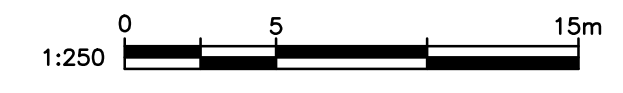
SIDEWALK DESIGN  
FROM GOWARD RD TO 263 PROSPECT LAKE ROAD

1:250 0 5 15m

SHEET 1 OF 5



WEST SAANICH - PROSPECT LAKE / SPARTON PROJECT  
SIDEWALK DESIGN  
FROM 263 PROSPECT LAKE ROAD TO PROSPECT LAKE ELEMENTARY SCHOOL



SHEET 2 OF 5



MATCHLINE  
FOR CONTINUATION SEE SHEET 1

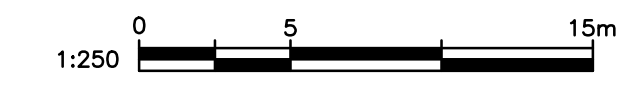
MATCHLINE  
FOR CONTINUATION SEE BELOW

MATCHLINE  
FOR CONTINUATION SEE ABOVE

MATCHLINE  
FOR CONTINUATION SEE SHEET 3

WEST SAANICH - PROSPECT LAKE / SPARTON PROJECT

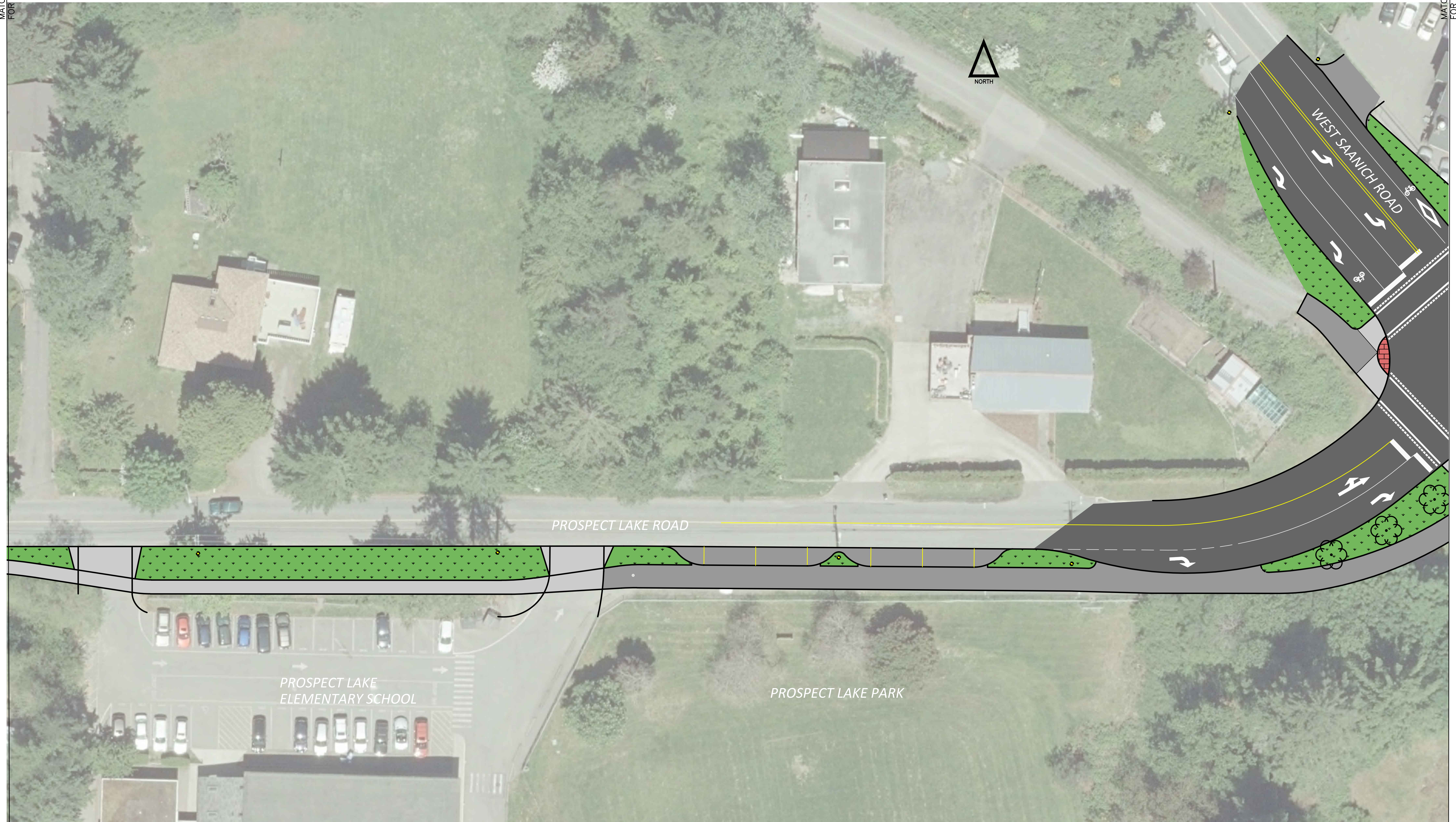
SIDEWALK DESIGN  
PROSPECT LAKE ELEMENTARY SCHOOL TO INTERSECTION



SHEET 3 OF 5

MATCHLINE  
FOR CONTINUATION SEE SHEET 2

MATCHLINE  
FOR CONTINUATION SEE SHEET 4



WEST SAANICH - PROSPECT LAKE / SPARTON PROJECT

INTERSECTION UPGRADE

1:250 0 5 15m

SHEET 4 OF 5

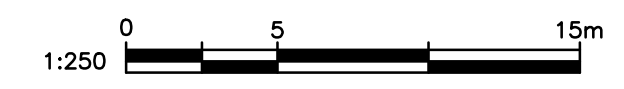
MATCHLINE  
FOR CONTINUATION SEE SHEET 3



MATCHLINE  
FOR CONTINUATION SEE SHEET 5

WEST SAANICH - PROSPECT LAKE / SPARTON PROJECT

SPARTON ROAD SIDEWALK



SHEET 5 OF 5

MATCHLINE  
FOR CONTINUATION SEE SHEET 4



PROSPECT LAKE  
COMMUNITY HALL

SPARTON ROAD

WRAY AVENUE

